

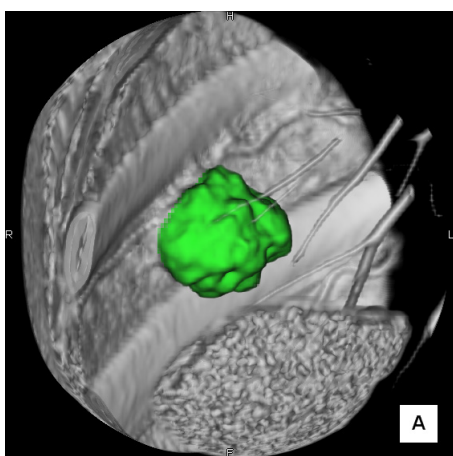
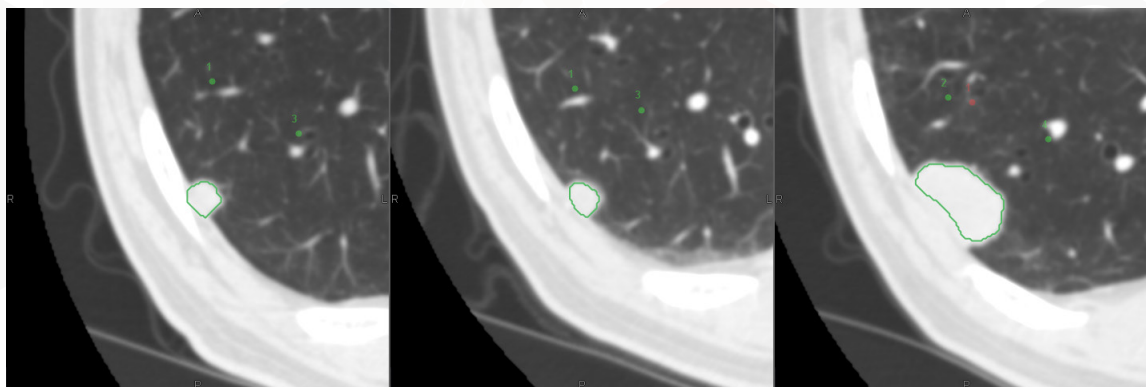
CT Lesion Analysis

SINGLE CLICK LESION RECOGNITION AND TRACKING

A baseline study with serial follow-ups can be rapidly and efficiently analyzed for lesion changes across studies. Click on a lesion to perform automatic extraction and measurements. Linking individual lesions over time provides the doubling time, calculated for each interval between studies. Up to three serial views of lesions can be viewed side-by-side. Clicking on the report button automatically inserts key images with additional data for each volume of interest.

Key features:

- Tracks lesions for dimensional and volume changes over time
- Calculates doubling time for each study interval
- Automatic compilation of images and data into a summary report



	Baseline	Follow-up 1	Follow-up 2
Volume	585.4 mm ³	543.0 mm ³	6388.1 mm ³
Maximum Diameter	14.4 mm	13.6 mm	31.8 mm
Minimum Diameter	11.9 mm	11.9 mm	28.0 mm
Average Diameter	13.2 mm	12.7 mm	29.9 mm
Maximum Intensity	363.0	66.0	112.0
Minimum Intensity	-200.0	-200.0	-200.0
Average Intensity	2.0	-10.2	27.5
Standard Deviation	62.4	62.1	49.6
Total Volume	924.1 mm ³	1096.7 mm ³	9775.3 mm ³
Volume Change		92.7 %	1176.5 %
Doubling Time		-717.8 days	119.8 days
Position			
Shape			
Comments			

Japan Office

1-4-28 Mita, Minato-ku, Tokyo, 1080073, Japan
Tel: +81 3 5427 1903 <http://www.zio.co.jp>

US Office

1301 Shoreway Road, #325, Belmont, CA 94002-4105, USA
Tel: +1 650 413 1300 <http://www.ziosoftinc.com>