

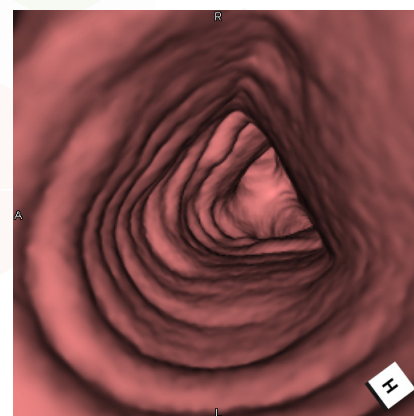
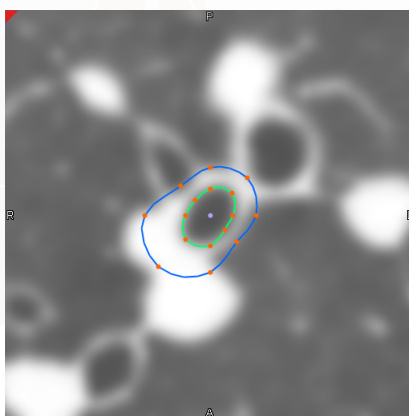
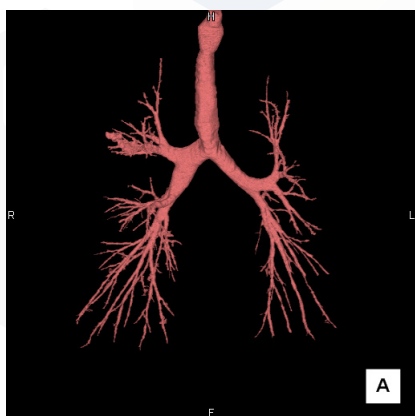
# CT Pulmonary Analysis

## STRUCTURE AND FUNCTION IN MOMENTS

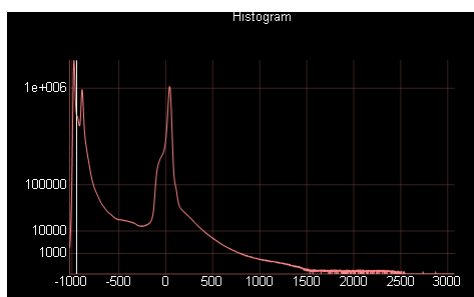
This very automated workflow provides fast access to structural and dimensional aspects of the bronchial tree, virtual fly-through on a selected bronchial pathway, then demonstrates low attenuation volume (LAV) regions graphically and quantitatively.

### Key features:

- Automatic segmentation of the bronchial tree
- Bronchiole dimensional analysis
- Bronchial pathway fly-through
- LAAs demonstrated by slice, VR image, data table, and histogram
- Preformatted report, capturing key images and LAV data



Section	Lung Vol. (cc)	LAV(cc)	LAV(%)	Residual Vol. (cc)	Residual(%)
All	4037.93cc	271.28cc	6.72%	3766.65cc	93.28%
Left	1742.79cc	93.57cc	5.37%	1649.21cc	94.63%
Top left	455.87cc	42.69cc	9.36%	413.18cc	90.64%
Middle left	807.75cc	45.84cc	5.67%	761.91cc	94.33%
Bottom left	479.17cc	5.04cc	1.05%	474.13cc	98.95%
Right	2295.15cc	177.71cc	7.74%	2117.44cc	92.26%
Top right	472.56cc	76.80cc	16.25%	395.75cc	83.75%
Middle right	989.54cc	69.12cc	6.99%	920.42cc	93.01%
Bottom right	833.05cc	31.78cc	3.82%	801.27cc	96.18%



### Japan Office

1-4-28 Mita, Minato-ku, Tokyo, 1080073, Japan  
Tel: +81 3 5427 1903 <http://www.zio.co.jp>

### US Office

1301 Shoreway Road, #325, Belmont, CA 94002-4105, USA  
Tel: +1 650 413 1300 <http://www.ziosoftinc.com>