

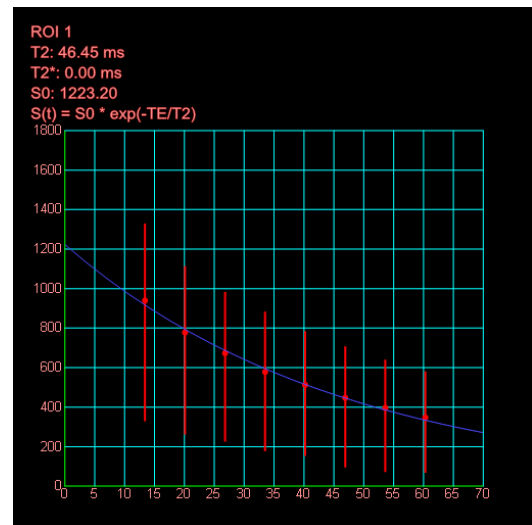
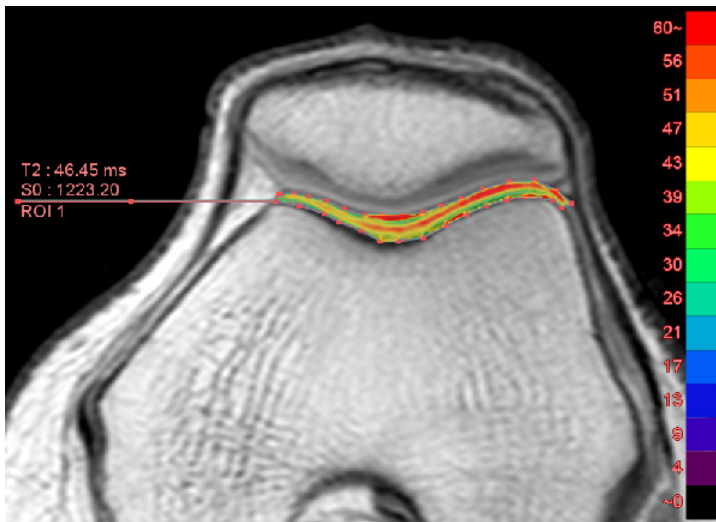
MR Tx Mapping

EASILY COMPARE VALUES FOR DIFFERENT AREAS

The Tx Mapping protocol provides analysis of a single plane MR data series captured while varying the Echo Time (TE) or spin lock time (SLT). With T2, T2* or T1rho weighted data, Ziostation measures the corresponding values in a specified ROI, displaying a color map parametric overlay on the imaging data, and generating graphs of signal decay against echo time (T2/T2* mapping) or spin lock time (T1rho mapping).

Key features:

- Multiple ROIs simultaneously displayed
- T2, T2* and T1rho mapping
- Graphic display of Tx changes over time



Japan Office

1-4-28 Mita, Minato-ku, Tokyo, 1080073, Japan
Tel: +81 3 5427 1903 <http://www.zio.co.jp>

US Office

1301 Shoreway Road, #325, Belmont, CA 94002-4105, USA
Tel: +1 650 413 1300 <http://www.ziosoftinc.com>